



ST PETER'S
C.E. Primary School



The Keys Newsletter

2nd May 2025

Dear Parent / Carer,

This week, we took three teams to tournaments and competitions and what fantastic performances they all gave!

On Monday, our Year 2 footballers entered the St Helens Schools Football Tournament and showed off the excellent talent we have at school. They were narrowly beaten in the final by a strong St Bartholomew's side but returned proudly with a medal each. Well done to all involved!

On Tuesday, we made the short trip to Newton Cricket Club with our Year 5 cricket team. Once again, our pupils made us proud, winning all their games except one and finishing second in the tournament. A brilliant effort! Champions!

On Wednesday evening, Year 5 competed in the Hope Academy Quiz Kids competition, pitting their brains against seven other schools. Our clever quiz team won convincingly with impressive knowledge across literature, mathematics, and general knowledge. Congratulations to our fabulous Quiz Team!

You may also be aware that we are producing a poetry book titled "Whispers of the Wild – A Journey of Lost and Found Words." This project grew out of our World Book Day celebrations and features poems by many of our pupils. We are currently gauging interest to determine how many copies to order. The book will cost approximately £4.00, and an expression of interest form will be sent out shortly.

Have a lovely weekend!

Mr Robinson
Headteacher



Awards week beginning 28th April 2025



GROWTH MINDSET

Barney – Reception
Sebbie – Year 1
Greyson - Year 2
Dolly – Year 3
Hugo – Year 4
Emily – Year 5
Charlotte – Year 6



STAR OF THE WEEK

Sophia T – Reception
Camille – Year 1
Noah - Year 2
Theo – Year 3
Noah – Year 4
Robbie – Year 5
Joseph – Year 6



This week's Courage certificate is for Arts:

Lacey-Mae– Reception
Isla – Year 1
Penny - Year 2
Faye – Year 3
Freddie – Year 4
Jacob – Year 5
Sophie – Year 6



VALUES

Ellie – Love & Respect - Reception
Alice – Respect – Year 1
Millie – Trust – Year 2
Julia – Trust – Year 2
Imogen - Love - Year 3
Hugo – Love - Year 4
Evie – Love – Year 5
Eric – Trust – Year 6

SuperStars



Leo – Year 1
Alan - Year 2
Theo – Year 3
Hassan– Year 4
Kian – Year 5

SEN NOTICE

Please note that Mrs Vinyard (SENCO) is currently on jury duty for two weeks which began on Monday 28th. She will not be contactable during this time.

She will be available to contact on her return.

YEAR 3 AND YEAR 5 CORRESPONDENCE

Whilst both Mrs Vinyard and Ms Eves are on jury duty, please do not use the class emails and send all emails to stpeter@sthelens.org.uk

YEAR 3 PE

Year 3 will have PE on Wednesday 7th May and revert back to the Monday session from the following week.

KIDSLINGO

There will be no Kidslingo session on Wednesday 7th May; parents should have received details directly from the Kidslingo team.

DATES FOR YOUR DIARY

EVENT	DATE
SATS Week	Week Commencing Monday 12 th May
Whole School Disco	Thursday 15 th May
Road Safety – all classes except Years 5 & 6	Monday 19 th May
Y4 – Geography Trip to Chester Zoo	Tuesday 20 th May
Class Photos	Friday 23 rd May
Last Day of Half Term	Friday 23 rd May





THE RAINBOW TEAM



The Rainbow Team

Safeguarding Nurture Wellbeing Behaviour

When the rainbow appears in the clouds, I will see it and remember the everlasting covenant between me and all living beings on Earth.

Genesis 9:16



Mrs Colley: RainbowTeam Lead

Mrs Colley:	Senior Mental Health Lead Behaviour Lead Designated Safeguarding Lead
Mrs Vinyard:	SENCO
Mrs Harrison:	EYFS / KS1 Deputy Safeguarding Lead
Mrs Davidson:	Pastoral / Nurture

Our Early Help approach

**If you feel your child could benefit from some pastoral support,
do not hesitate to contact us.**

Our Senior Mental Health Lead ensures that all our pupils who require pastoral care for issues such as bereavement, friendship issues, home issues and anxiety, receive time each week with our pastoral staff who offer over 8 hours of individual and small group sessions.

If you feel that your child could benefit from this offer, please contact Mrs Colley.

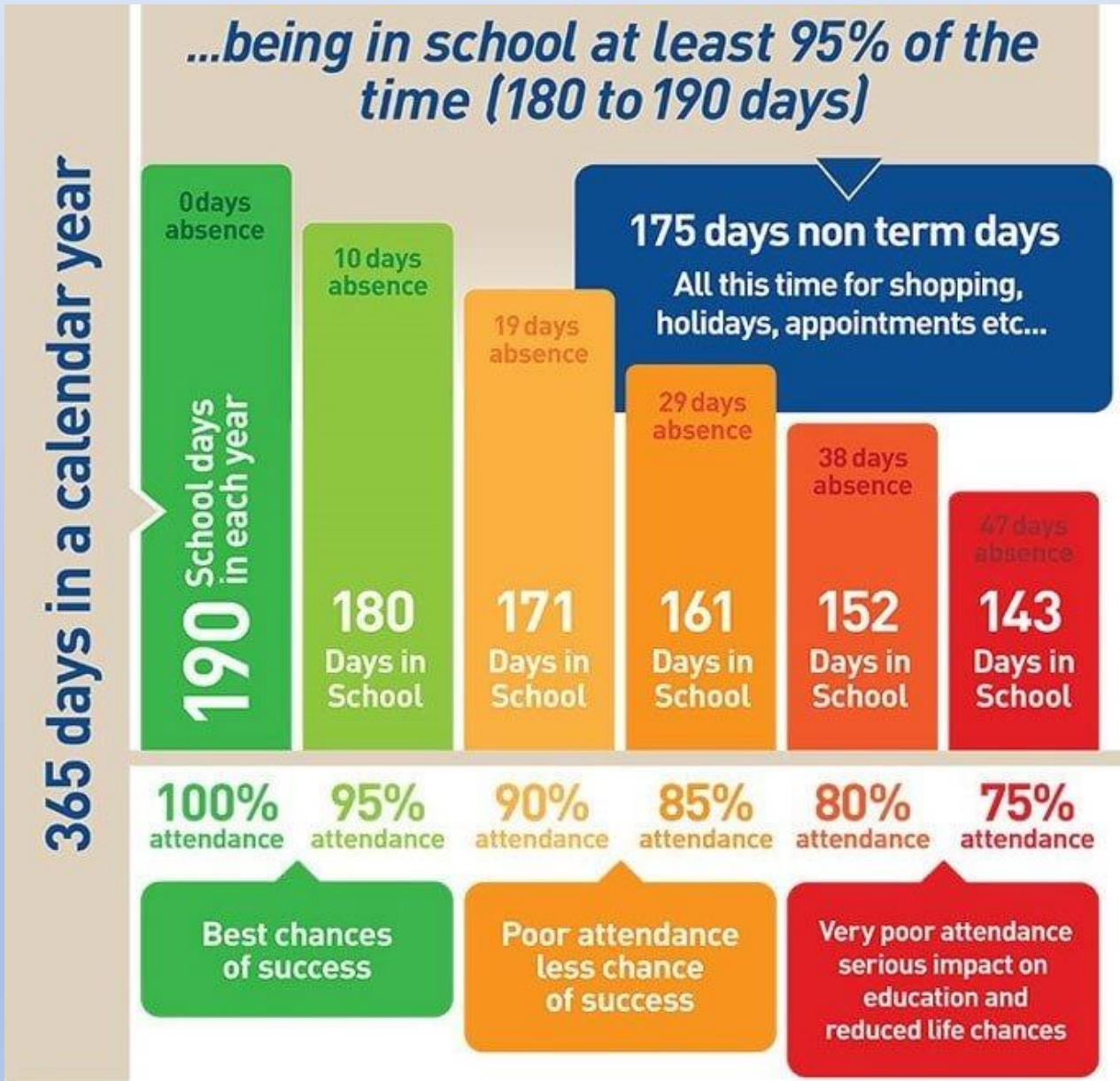
The team has regular meeting to discuss and measure the progress of pupils who fall into specific categories, including attendance, wellbeing issues, SEN, behavioural issues and safeguarding.



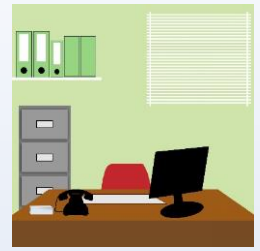
Attendance

Whole School Target: 98%

Current Average Whole School Attendance: 97.2%



OFFICE NEWS



UNIFORM

Uniform can be ordered direct from Touchline UK Liverpool Rd, Warrington, WA5 1AE, 01925 413777

sales@touchline-embroidery.com

We also have a small number of items on the School Money site under SHOP which you can pay for then contact school to arrange for them to be sent home with your child.

ABSENCE

When reporting on the absence line, can we politely request that you leave a brief description of your child's illness rather than just saying they are unwell. If your child has vomiting or diarrhoea please note that they should not return to school for a period of 48 hours after the last incident. This is a local authority policy

Applications for Holiday Leave must be submitted to school at **least 4 weeks** in advance. Forms can be found on the school website or requested from the school office. In accordance with Government and Local Authority policy, holidays taken during term time will only be authorised in **exceptional circumstances**.

CHANGES

It is very important that if you change contact numbers, emails or addresses that you advise us as soon as possible. Any changes must be sent into school via email.

Thank you

Contact Details

St Peter's C.E. Primary School
Birley Street
Newton-le-Willows
WA12 9UR
01744 678630
stpeter@sthelens.org.uk
<https://twitter.com/NLWStPeters>
www.st-peters.st-helens.sch.uk



Share your views and ideas for the future of Newton-le-Willows

St Helens Borough Council has been successful in securing Plan for Neighbourhoods funding for Newton-le-Willows. This funding will see £20m invested in the town, spread over the next 10 years, and is in addition to other work you might have heard about in Earlestown.

Plan for Neighbourhoods funding will enable the delivery of projects that address key issues facing residents and businesses in Newton-le-Willows.

A Neighbourhood Board of local representatives has been established to oversee the development and delivery of the Plan for Neighbourhoods programme, and they want to hear from you!

Saturday 12th April, 10.00am – 4.00pm:

- The Pop Up, Earlestown Market, Market St, Newton-le-Willows, WA12 9AQ

Sunday 4th May, 12:00pm – 5.00pm:

- High Street Markets, High Street, Newton-le-Willows, WA12 9SH

Monday 7th April – Sunday 18th May:

Share your views online and see our upcoming engagement events at:

<https://placed.mysocialpinpoint.com/newton-le-willows-plan-neighbourhoods>



ST HELENS
BOROUGH COUNCIL



Funded by
UK Government

Neurodevelopment pathway drop ins



Mersey Care
NHS Foundation Trust

Come along to one of our drop in sessions in St Helens.

Our team will answer questions you have about the neurodevelopment pathway process.

You don't need to be using our service, you can drop in if you have any questions to ask about this.

We look forward to meeting you.

Second Tuesday of the month at Parr Children's Centre, 9.30am to 11.30am and Sutton Family Hub 1pm to 4pm*.

Third Tuesday of the month at Newton Family Hub, 1pm to 4pm.

Fourth Tuesday of the month at Central Link Family Hub, 1pm to 4pm.

*Please note, on Tuesday 8 July the session will be held at Sutton Family Hub 1pm to 4pm only.

13 May at Parr Children's Centre, 9.30am to 11.30am and Sutton Family Hub, 1pm to 4pm.

10 June at Parr Children's Centre, 9.30am to 11.30am and Sutton Family Hub, 1pm to 4pm.

8 July at Sutton Family Hub, 1pm to 4pm.

20 May at Newton Family Hub, 1pm to 4pm.

17 June at Newton Family Hub, 1pm to 4pm.

15 July at Newton Family Hub, 1pm to 4pm.

27 May at Central Link Family Hub, 1pm to 4pm.

24 June at Central Link Family Hub, 1pm to 4pm.

22 July at Central Link Family Hub, 1pm to 4pm.

Sutton Family Hub, Ellamsbridge Road, Sutton, St Helens, WA9 3PY

Parr Children's Centre, Ashton's Green Drive, Parr, St Helens, WA9 2AP

Central Link Family Hub, Westfield Street, (off Peter Street), St Helens, WA10 1QF

Newton Family Hub, Patterson Street, Newton-le-Willows, St Helens, WA12 9PZ



SUPPORTING CHILDREN'S MENTAL HEALTH

10 Conversation Starters for Parents

Talking about mental health to children is sometimes hard. To the point that we can put off raising the subject, not wanting to unearth problems or raise overwhelming subjects that we perceive our child is too young or not ready for. But rather than keeping children in the dark, this guide is designed to help you confidently talk about mental health, so they feel comfortable talking about their own worries and end any stigma before it begins.



1 LISTEN

This sounds obvious, but it is not something we are always great at. Active listening is where we listen without interrupting or making judgements and shows interest in what is being said. If your child feels listened to in the 'smallest of problems' they will become confident that you will listen when the 'biggest of problems' arise.

2 ASK TWICE

The campaign from time to change is great. <https://www.time-to-change.org.uk/support-ask-twice-campaign>. Be tenacious about your child's wellbeing. Children instinctively know when your questions and support come from a place of wanting to help and care.



3 THERE IS NO SUCH THING AS A STUPID QUESTION

This advice also relates to the first point. If your child can ask you any questions about the smallest of things and you listen and answer without shaming or belittling, then they will have more confidence to ask the biggest of questions.



4 BE OPEN AND HONEST

Children appreciate honesty, particularly if you are having to share information or talk about a difficult subject. For example, you may be talking about death or loss: 'It's very sad that Nana has died' or 'I feel sad that Nana has died'. How you talk about a subject will differ depending on their age and developmental maturity. Talking about death to a younger child for example will be different to that of an older teen, as their experience and understanding of death is different.

5 KNOW WHEN TO SEEK HELP

Assess the severity of the mental health difficulty you are noticing. Is the difficulty making it hard for your child to function regularly throughout everyday life? How frequently is your child affected, how long does it last and how persistent is it? Are they having problems controlling the difficulty? Talk to your child about your concerns and that it is likely they will need further support beyond family and friends.



6 TALK ABOUT MENTAL HEALTH NATURALLY

Speak about mental health as part of everyday life, so that talking about our feelings and those of others is normalised. If the usual 'are you ok?' is not creating an opportunity for dialogue then say something like 'I know when something like that has happened to me I felt like this... is that how you are feeling or are you feeling something else?'.

7 EMPATHISE

'It makes sense that you would feel this way, it is understandable'. Children often worry about things that we, as adults, might see as trivial or silly. However, for them at their age and stage it is a big concern and they need our kindness and care when they show their vulnerability and share their worries.



8 HELP YOUR CHILD FEEL SAFE

Teens particularly feel that by talking about their worries or concerns that this will make things worse. Reassure your child that you will discuss a plan of action together and what may or may not need to happen next. If they are a younger child, it is likely you will need to lead the conversation and explain next steps.



9 MIND YOUR LANGUAGE

Be mindful of the language you use at home to describe and talk about mental health. Stigma often arises from misconceptions and a choice of language which is harmful. Using the word 'mental', 'man-up' or other such words in a derogatory way won't encourage your child to talk about their mental health for fear of being belittled.



10 IT IS OK TO SAY 'I DON'T KNOW WHAT TO DO NEXT'

Adults do not have all the answers but often children think they do. It is ok to acknowledge that what your child is experiencing is not something you have come across before or know anything about, but that you will work it out together and seek help together.



Meet our expert

This guide has been written by Anna Bateman. Anna is passionate about placing prevention at the heart of every school, integrating mental wellbeing within the curriculum, school culture and systems. She is also a member of the advisory group for the Department of Education, advising them on their mental health green paper.



Sources of Information and Support

Your GP
Young Minds <https://youngminds.org.uk/v>
<https://www.nhs.uk/conditions/stress-anxiety-depression/>
<https://www.actionforchildren.org.uk/news-and-blogs/parenting-tips/2016/november/a-simple-guide-to-active-listening-for-parents/>
<https://www.themix.org.uk/mental-health>

Wonderland
Community
Centre

Listen
4
Change

*For all
Parent
Carers*



Drop in to chat with other parent carers in a relaxed setting, tell us what is working well and what isn't working so well with health, education and social care services and to help improve them.

*Free
Parking
Available*

*Friday's
10am-
12pm*

4th April
9th May
6th June
11th July

Reflection
Court, Canal
Street,
St Helens
WA10 3JQ



Wonderland
Community
Centre

Listen
4
Change

*For all
Parent
Carers*



Drop in to chat with other parent carers in a relaxed setting, tell us what is working well and what isn't working so well with health, education and social care services and to help improve them.

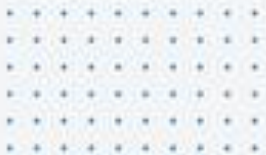
*Free
Parking
Available*

Reflection
Court, Canal
Street,
St Helens
WA10 3JQ



*Tuesday's
6.30pm-
8pm*

*22nd April
20th May
24th June*



The PTA are
on



Social Media

Several small, light blue squares of varying sizes are scattered around the word 'Media'.

Facebook: St-Peters Pta

Instagram: stpeters_pta_nlw



Please send us a request to keep up
to date with news/events/reminders!