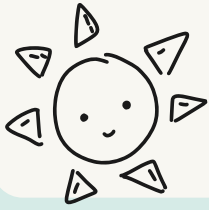


# ST PETER'S PTA NEWSLETTER

SPRING TERM 2, 24/25



## WELCOME

Welcome to our new look newsletter! Those of you who have older children may remember the newsletters of old. We have re-launched and revamped to bring you all the latest information, diary dates and updates on what the PTA are up to!

Thank you for your support already this year! Our recent February end of term discos were a huge success and raised **£700**. Have a look further on to see what we have been putting our funds towards!

Any questions, ideas or feedback is always welcome - just reach out to us on emails or socials...details below!

Enjoy Spring Term 2! The lighter nights and warmer days are coming!

*The PTA*

## UPCOMING EVENTS

MAR

**13**

Year 3 non-uniform day - Mother's Day shop donations

**14**

Rest of school non-uniform day - Mother's Day shop donations

**21**

Mother's Day Shop

**24**

Easter Raffle tickets sent home/on sale

APRIL

**4**

Easter Raffle Draw

JUNE

**21**

Summer Fair



## PTA UNIFORM SHOP

We are really proud of our online pre-loved uniform shop! The shop is run by Rachel, who not only volunteers her time looking after online orders but also her loft space! You can donate any good quality, branded school uniform (e.g. jumpers, cardigans, polo shirts) in the box in the playground.

<https://www.pta-events.co.uk/stpeters-pta>

## CONTACT US

**Email:** [stpeters\\_pta@yahoo.com](mailto:stpeters_pta@yahoo.com)

**Instagram:** [stpeters\\_pta\\_nlw](#)

**Facebook:** [st-peters pta](#)



# OUR WORK

We want to give our children the very best school experience.  
This is how we help to achieve this...

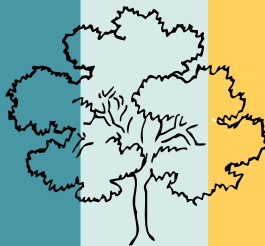
## EVERY YEAR WE FUND...

- 30 school bags for reception
- 30 bibles for reception 
- £668 donation towards the panto
- £350 Christmas selection boxes
- £800 donation towards year 6 coach to residential
- £250 towards year 6 leavers party



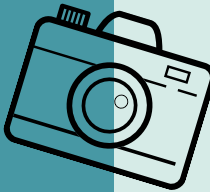
## WE ARE CURRENTLY FUNDRAISING FOR...

- 80 dictionaries for KS2
- Trees for the copse at the environmental hub
- MUGA netting to stop all the footballs being lost to the school roof!
- Playground equipment to be enjoyed by every age group



## THIS SCHOOL YEAR WE HAVE FUNDED...

- 2 raised ponds at the environmental hub
- 5 hedgehog hibernation boxes
- 2 wildlife cameras with SD cards
- 20 copies of Impossible Creatures
- 1 Reception mud kitchen £500
- 2 recycled plastic benches for the playground £900



**EVERY PENNY YOU KINDLY  
CONTRIBUTE GOES TO  
IMPROVING OUR  
CHILDREN'S SCHOOL  
EXPERIENCE**

**THANK YOU!**



## ENVIRONMENTAL HUB

The school is very proud of its environmental hub. The PTA have had huge involvement in supporting and funding the project.

Take a look at the environmental hub page on the school website...you will also see some videos of some of the wildlife who visit us!

<https://www.st-peters.st-helens.sch.uk/page/environment-hub/150781>

**Summer  
fair**  
**SATURDAY 21ST JUNE**

**Mother's  
Day Shop**  
**FRIDAY 21ST MARCH**

## WHAT WE DO

The Parent Teacher Association (PTA) exists to support the school in providing a great education and experience to the children. We do this through developing relationships between parents, carers and staff by providing activities, equipment and resources to the school.

All parents/carers and staff are automatic members of the PTA. There is a committee that oversee the running, but anyone is welcome to input ideas and/or time - you don't have to make a huge commitment - occasional extra hands are invaluable!

The PTA organises lots of activities through the year such as school discos, Mother's Day shop, Easter raffles, movie nights and of course the summer fair! All funds raised go back into providing resources for the school such as the new reception sand kitchen, resources for the eco-hub, new reading books and furniture.

Everyone is welcome to get involved, so if you are interested, or have any ideas, please contact us via email or our social media pages.

ST PETER'S PTA

# EASTER RAFFLE!

WIN AMAZING PRIZES!

TICKETS SENT HOME:  
MON 24TH MARCH

TO BE DRAWN:  
FRI 4TH APRIL

£1 PER TICKET

PLEASE SEND MONEY AND TICKETS  
(WITH NAME AND CLASS) INTO  
SCHOOL IN A SEALED ENVELOPE



TICKETS ALSO AVAILABLE AT:

[WWW.PTA-EVENTS.CO.UK/STPETERS-PTA](http://WWW.PTA-EVENTS.CO.UK/STPETERS-PTA)



# Mother's Day Shop!

*After the success of last year, we are hosting another Mother's Day Shop!*

*We would like to request donations for Mother's Day gifts to be sold ranging from £1-£5*

*Unfortunately we are unable to accept and sell alcohol products at the Mother's Day Shop*

## DONATIONS AND NON-UNIFORM DAY

**YEAR 3 ONLY - THURSDAY 13TH MARCH**  
**REST OF SCHOOL - FRIDAY 14TH MARCH**

## SHOP

**FRIDAY 21ST MARCH**

*The Mother's Day shop will be held during school time and each child will have the chance to come and buy something*